



Supplier of Control Instrumentation to the South African Electrical Industry

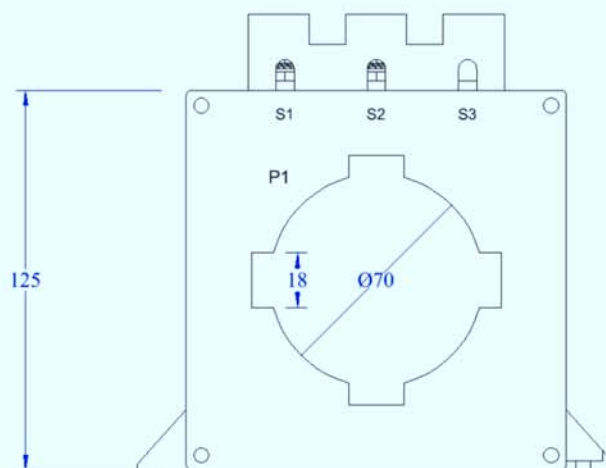
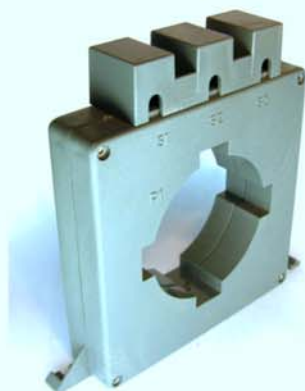
BR2

GENERAL

CT TYPE	RING TYPE
INPUT CURRENT	400A – 2500A
OUTPUT CURRENT	1A or 5A
SYSTEM VOLTAGE	660V AC
FREQUENCY	50Hz
STANDARD	IEC/SANS 61869-2

CASING

MATERIAL	MOULDED ABS
TERMINAL COVER	YES
MOUNTING TYPE	CHASSIS
INNER DIAMETER	70mm ID 80mm BUSBAR



ALTERNATIVES:

- BR2 86
- BR2 BUSBAR

