

COMBINED BIMETAL MAXIMUM CURRENT METERS

Combined bimetal maximum current meters are provided with a built-in bimetal system and a system with a moving iron. The meters are intended for testing momentary and thermal load of transformers, cables, electrical machines, etc. Meters 96 x 96 mm with a protecting transformer are also available on request.

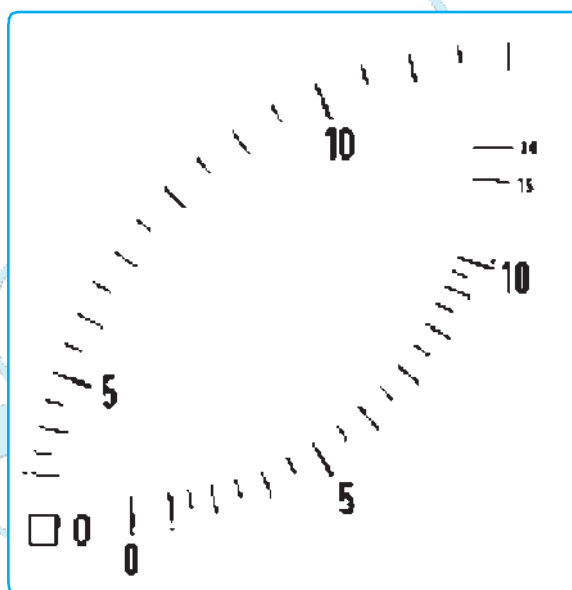
The accuracy class for average rms current value is 3, and for momentary value 1.5. The meters are provided with an interchangeable scale.



MQ 0217

SCALES IN FULL-SIZE

For meters: MQ 0207



10/5 A

TYPE	MQ 0317	MQ 0217	MQ 0117
Front frame (mm)	72 x 72	96 x 96	144 x 144
Cutting for mounting (mm)	68 x 68	92 x 92	138 x 138
Scale length (mm)	63/43	95/72	140/120
RATING			
1.2 A x A/1 A* 8 min.	•	•	•
6 A x A/5 A* 8 min.	•	•	•

*Rating of average current is 20% higher than the current transformer ratio.

The meter for a momentary value can indicate either 20% or 100% overload.

Self-consumption: 1.8 VA at 1.2 A; 2.8 VA at 6 A.

Other setting period (15, 20 and 30 minutes) on request.